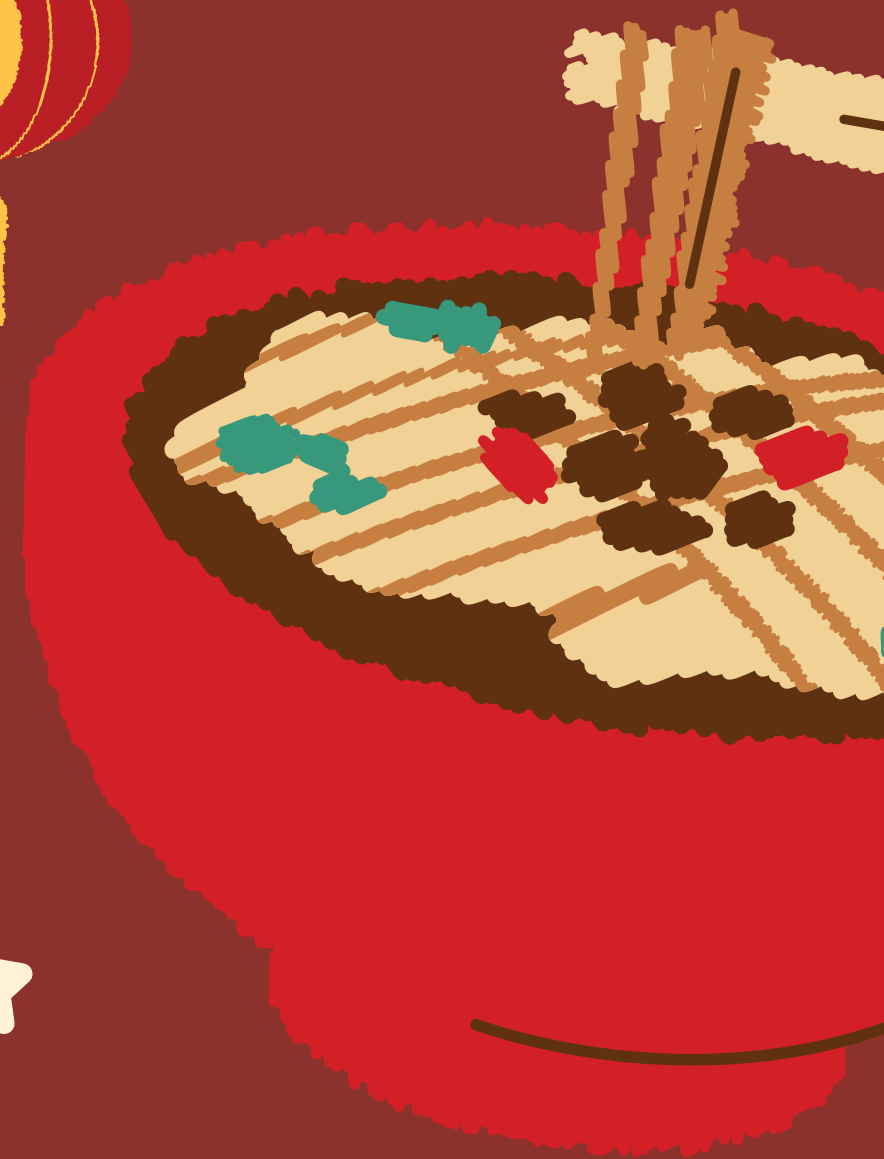
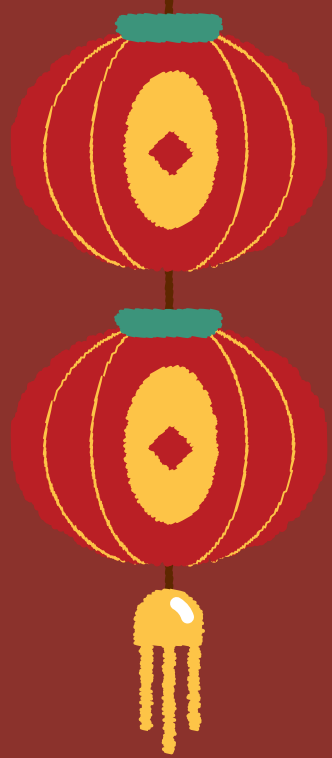


4 PICS 1 WORD



4 PICS 1 WORD



4 PICS 1 WORD



MOON

4 PICS 1 WORD



4 PICS 1 WORD



H A P P Y

4 PICS 1 WORD

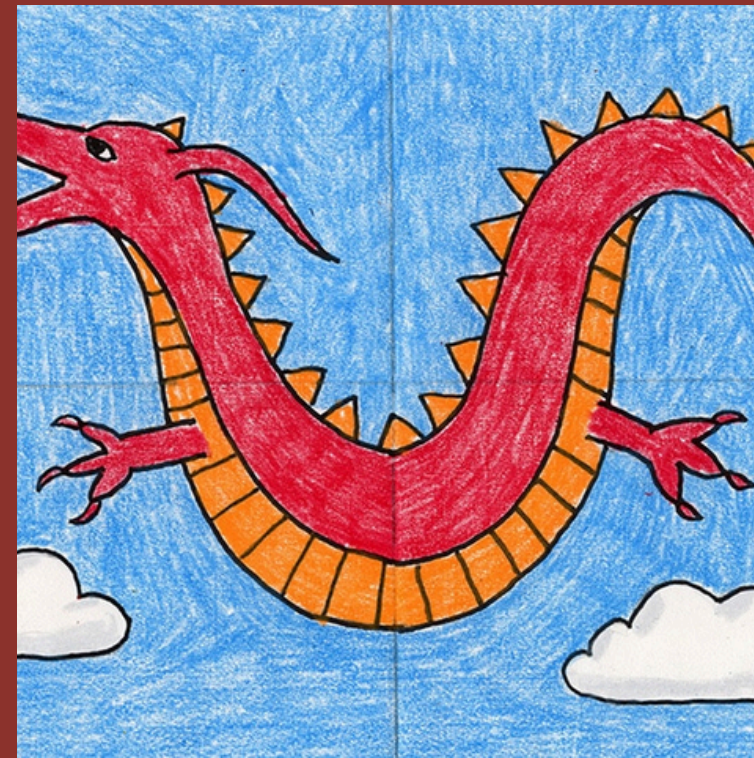


4 PICS 1 WORD

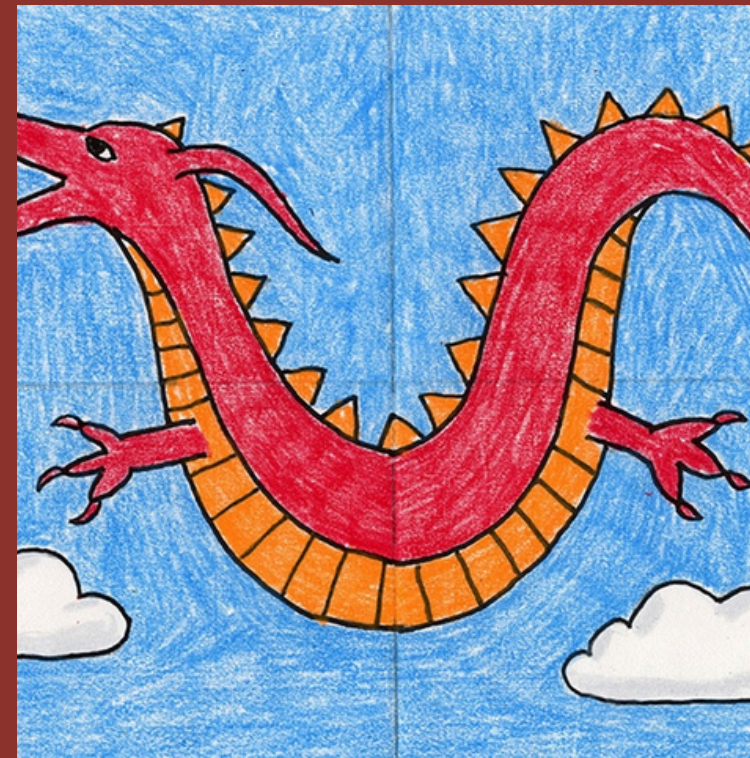


MONEY

4 PICS 1 WORD



4 PICS 1 WORD



D R A G O N

4 PICS 1 WORD



4 PICS 1 WORD



N E W

Y E A R

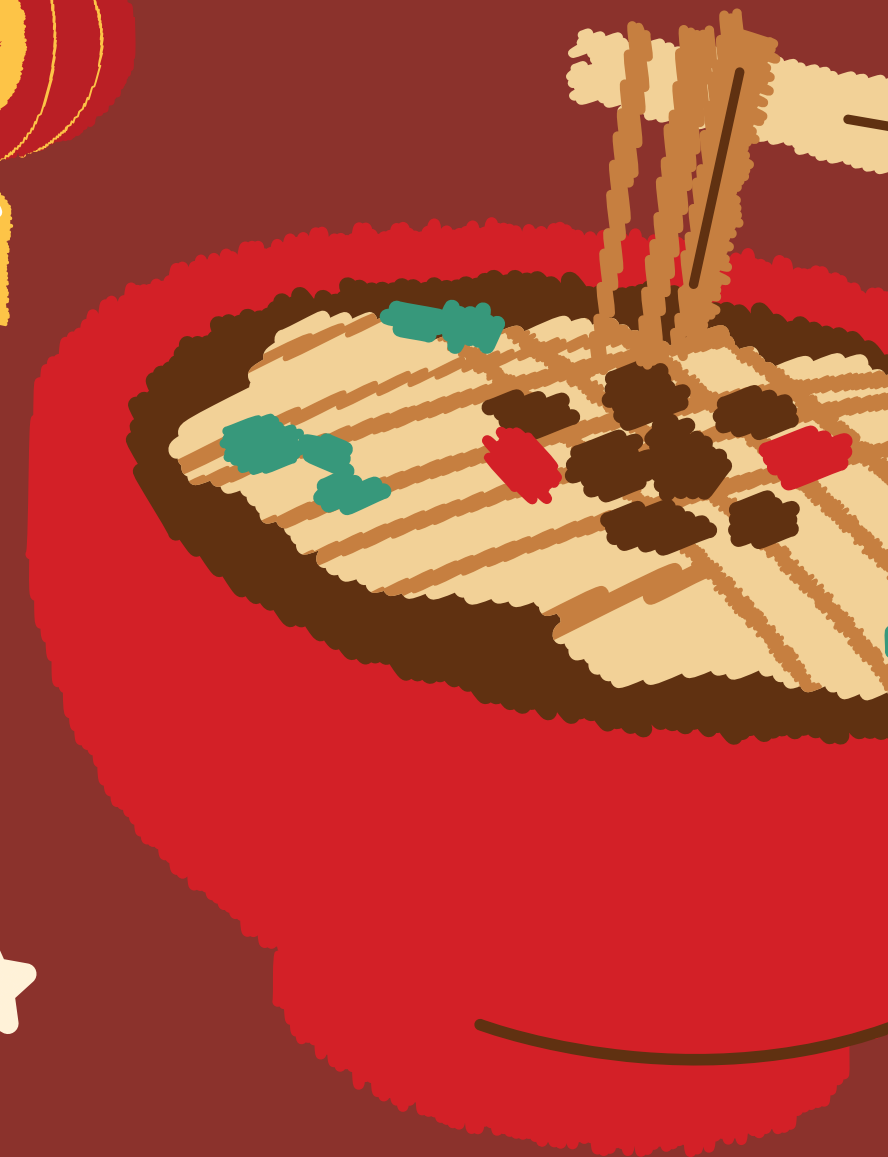


NEW YEAR CELEBRATIONS



-AND-

PREPOSITIONS



By the end of the lesson, learners are expected to:

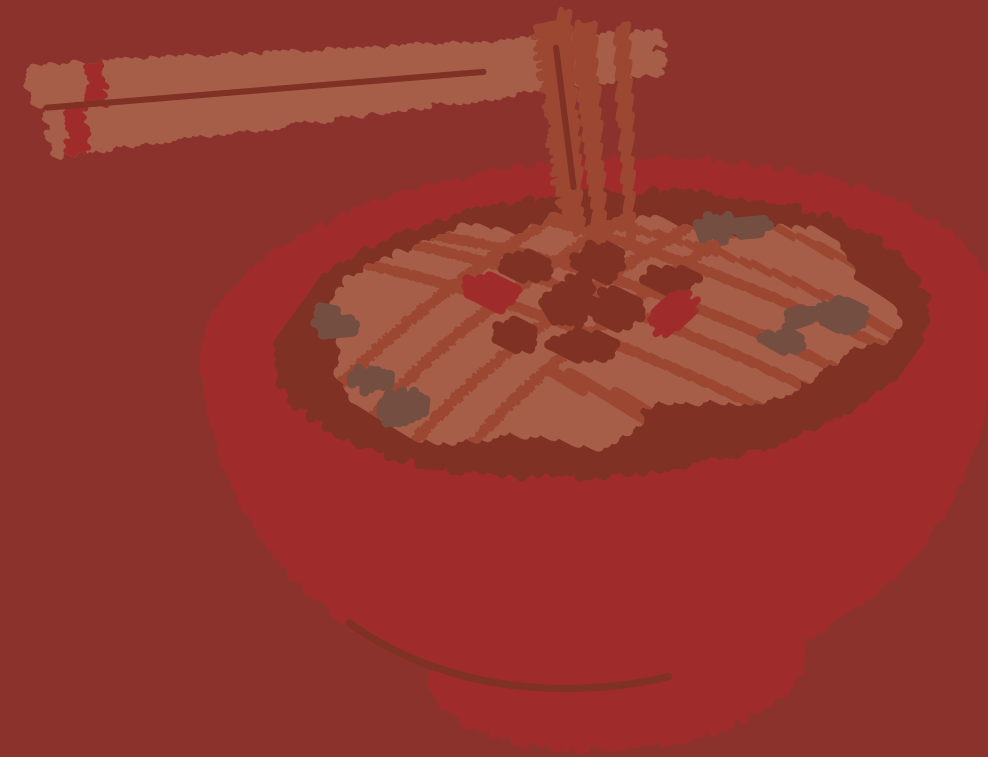
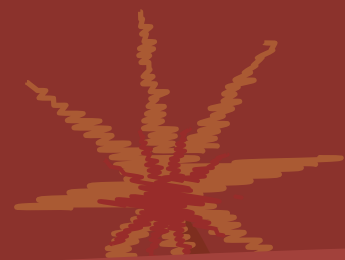


1. identify and use time phrases (on New Year's Eve, at midnight) and multi-word verbs (go on, get together, set off);
2. construct sentences and short paragraphs using appropriate time phrases and vocabulary to describe personal or cultural New Year traditions; and
3. share personal or cultural New Year traditions while showing appreciation for different celebrations around the world.



HOP IN IN WHAT'S NEW

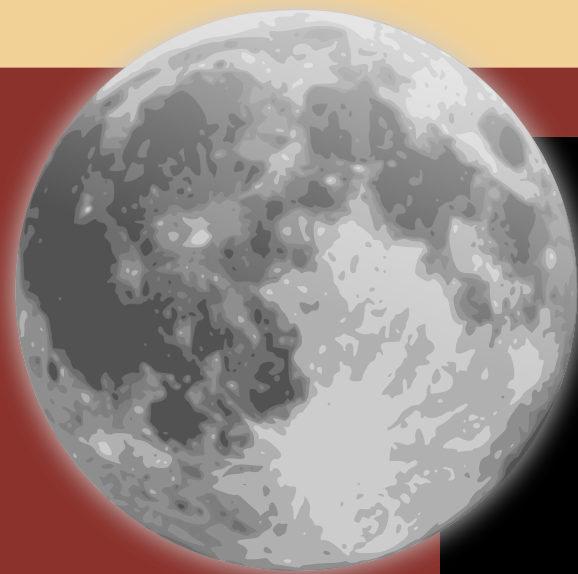
CLICK HERE 



Chinese New Year is the most important celebration in the Chinese calendar. It is also known as the **spring festival** because it is the time when people welcome the arrival of spring.



New Year celebrations start when there is a new moon, on the first day of the **lunar month** in the Chinese calendar, in January or February. Celebrations go on until the fifteenth day, when the moon is brightest.





Soup



Fish



**Spring
Rolls**



Dumplings



**Rice
Cake**





At the start of the first week of New year, people visit friends and family. The second week ends with the Lantern Festival on the fifteenth day of the lunar month.



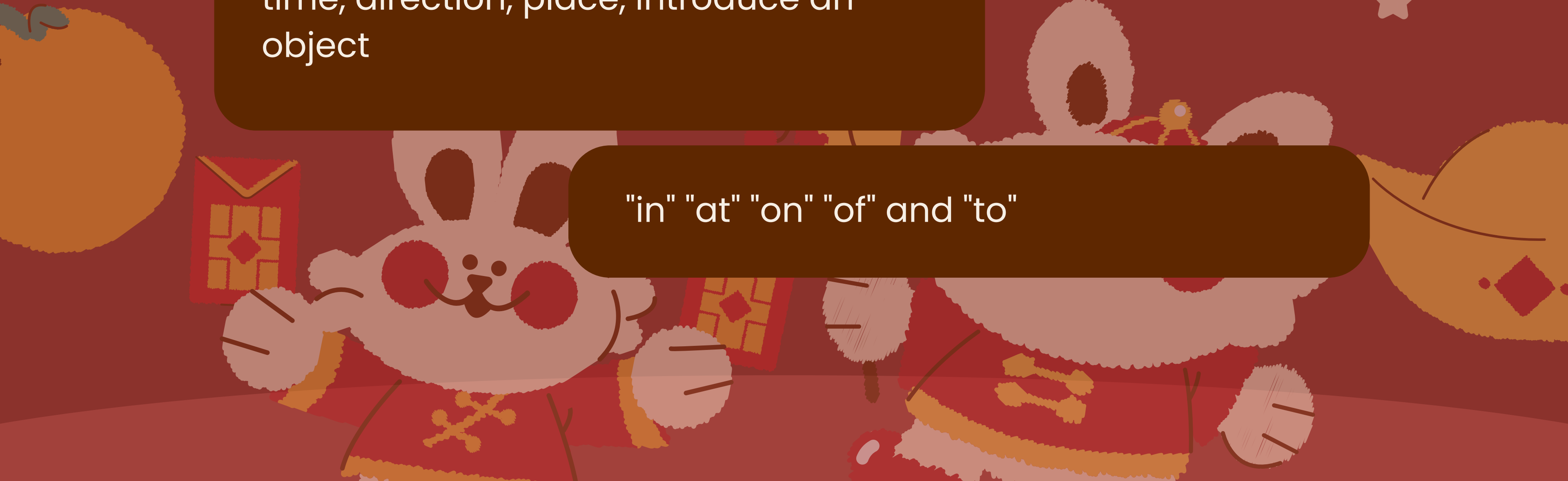


Chinese people think of dragons as helpful, friendly creatures which symbolise long life and wisdom.

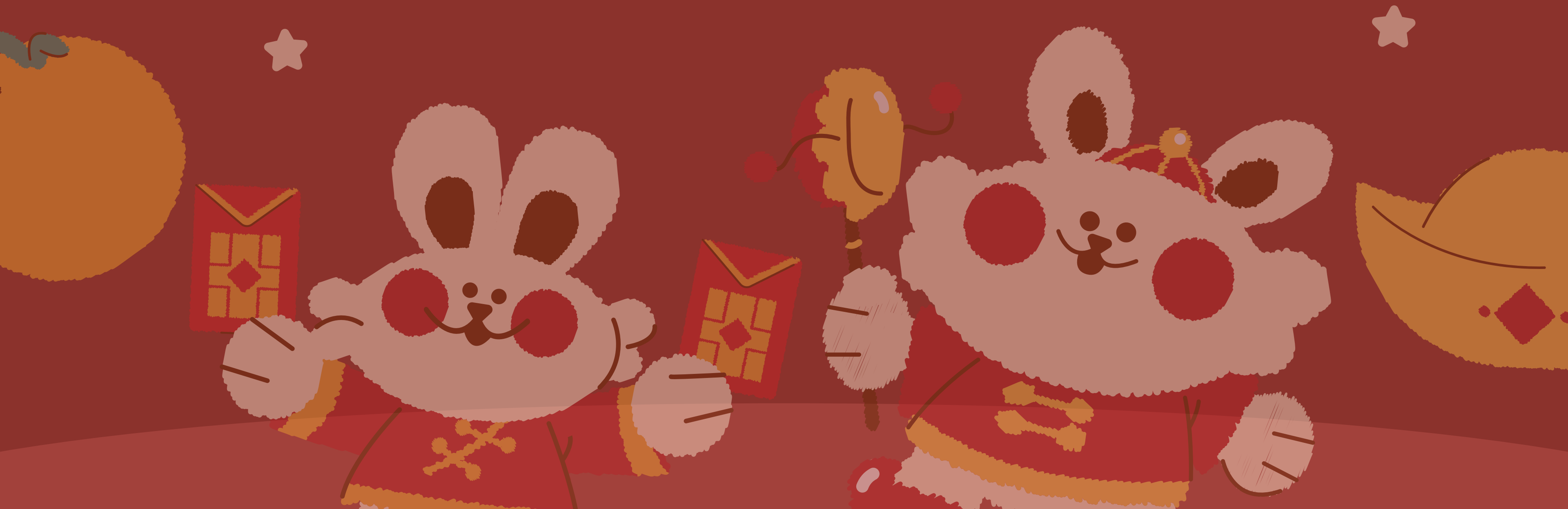
PREPOSITIONS

words before a noun to show location, time, direction, place, introduce an object

"in" "at" "on" "of" and "to"



RULES IN THE USE OF PREPOSITIONS OF TIME



RULE # 1

Use **'in'** with months, years and seasons. We also use it in phrases such as "in the morning, in the afternoon, in the evening".

RULE # 1

The Chinese New Year is celebrated
in January or February.



RULE # 1

In 2021, Chinese New Year was not well-celebrated because of the pandemic.



RULE # 1

Chinese New Year happens **in** spring.



RULE # 2

Use '**on**' with days and dates.

RULE # 2

This year, Chinese New Year was celebrated **on**
the 29th of January.



RULE # 2

The festival was celebrated **on** a Wednesday.



RULE # 3

Use '**at**' with clock times,
festivals, the weekend, the
start/end of...

RULE # 3

My mother would wake up **at** 7:00 a.m. to prepare for the New Year.



RULE # 3

We always light lanterns **at** the Lantern Festival.



RULE # 3

The concert will begin **at** the start of the event.



TO SUMMARIZE:



THE BOAT IS SINKING!

Three boats with the corresponding prepositions are placed in front of the class. Sentences with missing prepositions in time phrases will be presented in the presentation. The students must stand or fall in line in front of the preposition they think is correct for the given sentence.



#1

The meeting is scheduled __ Friday morning.

#1

The meeting is scheduled on Friday morning.

2

My cousin was born __ 2010

2

My cousin was born in 2010.

3

We enjoy relaxing _ _ the weekend.

3

We enjoy relaxing at the weekend.

4

My best friend's birthday is __ June 5th.

4

My best friend's birthday is on June 5th.

5

The train arrives __ 8:00 a.m. sharp.

5

The train arrives at 8:00 a.m. sharp.

6

I love going to the beach __ summer.

6

I love going to the beach in summer.

#7

We have English class __ Monday.

#7

We have English class on Monday.

8

My family prepares a feast __ Christmas.

8

My family prepares a feast at Christmas.

9

We have a school break _ _ April.

9

We have a school break in April.

10

The concert will begin __ the start of the event.

10

The concert will begin at the start of the event.



ACTIVITY 2



Directions: Work in groups of five. Discuss your answer and present it to the class. The learners will be given 5 minutes to construct their answers and 2 minutes to present.

Questions to answer:

- When do you celebrate New Year?
- What happens on New Year's Eve?
- What does your family do on New Year's Day?

QUIZ TIME!



ACTIVITY 3

Directions: Write an essay about other festivals celebrated in Indonesia. In your essay, describe the name and significance of each festival, how people celebrate it, and any unique customs or traditions involved. You may also include interesting facts about these festivals and how they reflect Indonesian culture.

Your essay must include at least three (3) correct uses of prepositions of time. Make sure your ideas are well-organized, and pay attention to grammar, spelling, and punctuation.

THANK YOU!

