

NOUNS

names



James



book



giraffe



Manila



birthday

ADJECTIVES

describe nouns



short



thick



tall

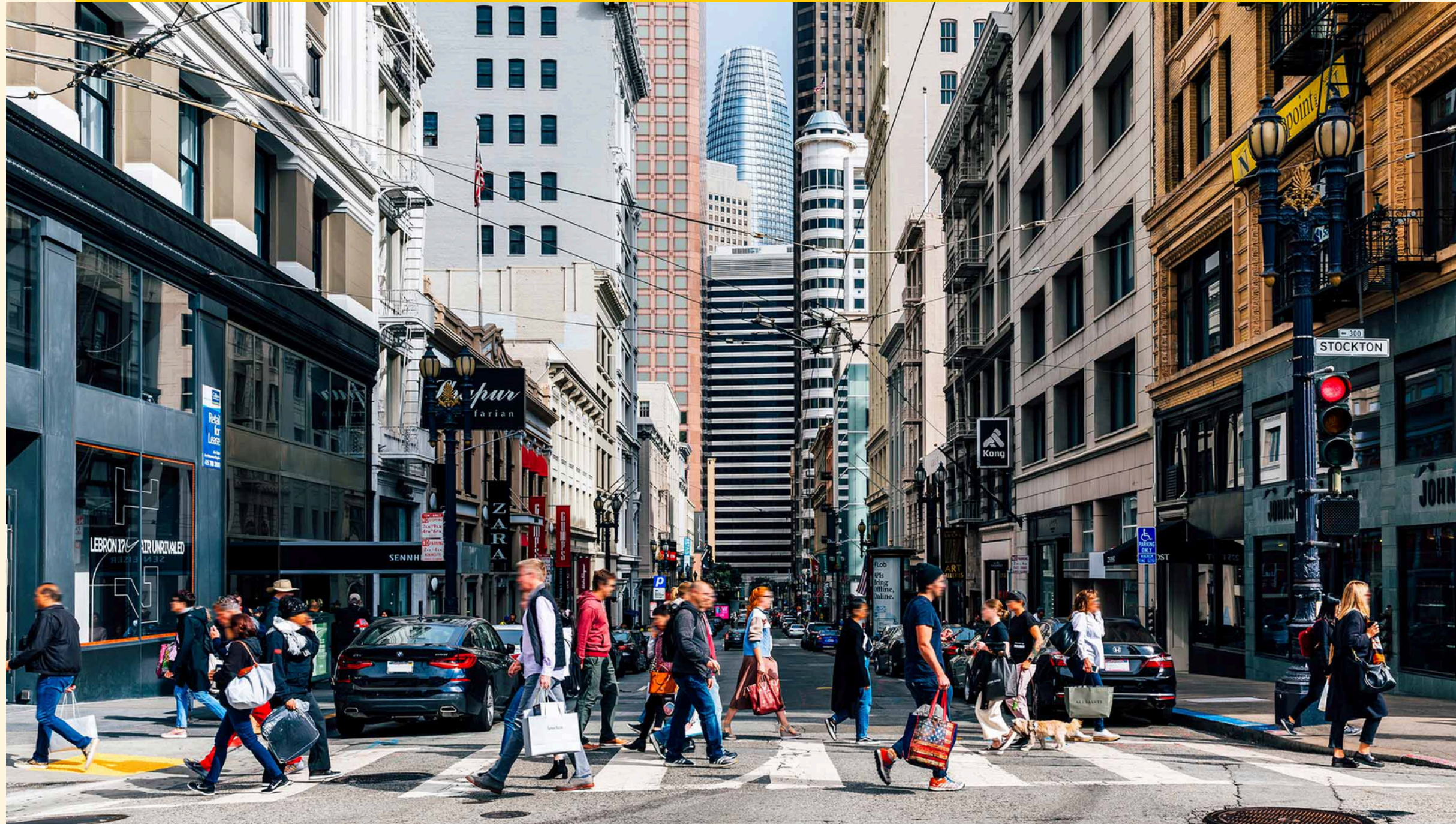


big



fun

BIG CITY

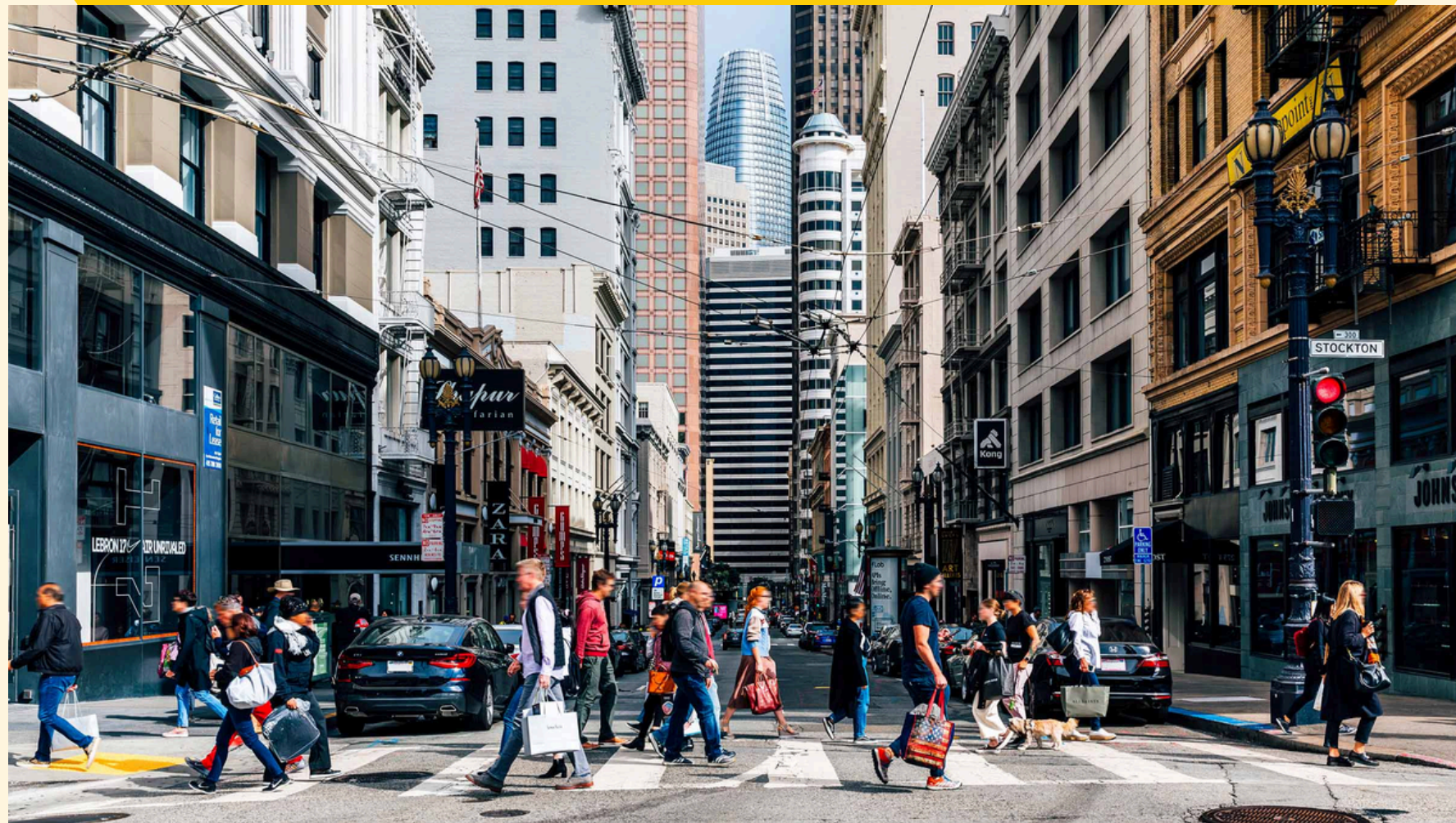


COUNTRY



WHERE WOULD YOU PREFER TO LIVE?

BIG CITY

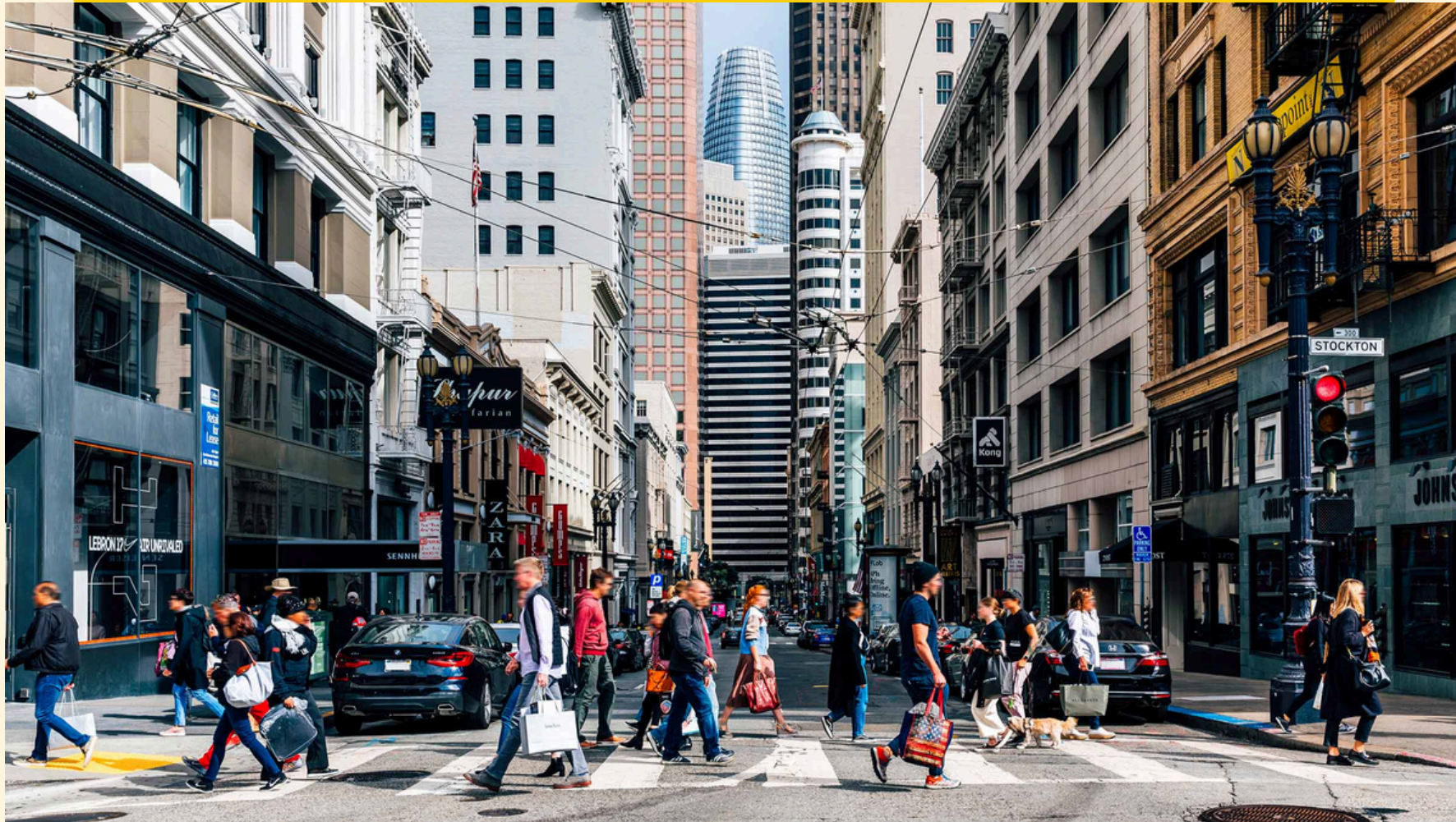


COUNTRY



WHAT ARE THE ADVANTAGES OF LIVING IN A BIG CITY? IN A COUNTRY?

BIG CITY



COUNTRY






CITIES

COMPARATIVE
ADJECTIVES

A stylized illustration of the Eiffel Tower in yellow and orange, set against a light purple background with a blue cloud and a pink scalloped border.

By the end of the lesson, learners are expected to:

1. identify and apply appropriate comparative adjectives when describing and comparing cities;
 2. construct meaningful sentences using comparative structures in both written and spoken communication; and
 3. express personal opinions about city life while respecting different viewpoints in discussions.
- 
- A stylized illustration of a hot air balloon with orange and yellow stripes, set against a light purple background with a blue cloud and pink trees, all enclosed in a pink scalloped border.

WORD VIBES!



Determine whether the given adjectives are positive or negative. If positive, the learners will answer 'Yes' and 'No' if otherwise.

[Click here to play.](#)



ADJECTIVE

An adjective is a word
that describes a noun.



EXAMPLE

Shanghai is a large city.



EXAMPLE

Shanghai is a large city.



EXAMPLE

It is peaceful in Amsterdam.



EXAMPLE

It is peaceful in Amsterdam.



EXAMPLE

Manila is such a crowded place.



EXAMPLE

Manila is such a crowded place.



COMPARATIVE ADJECTIVE

An adjective that
describes **two nouns**.



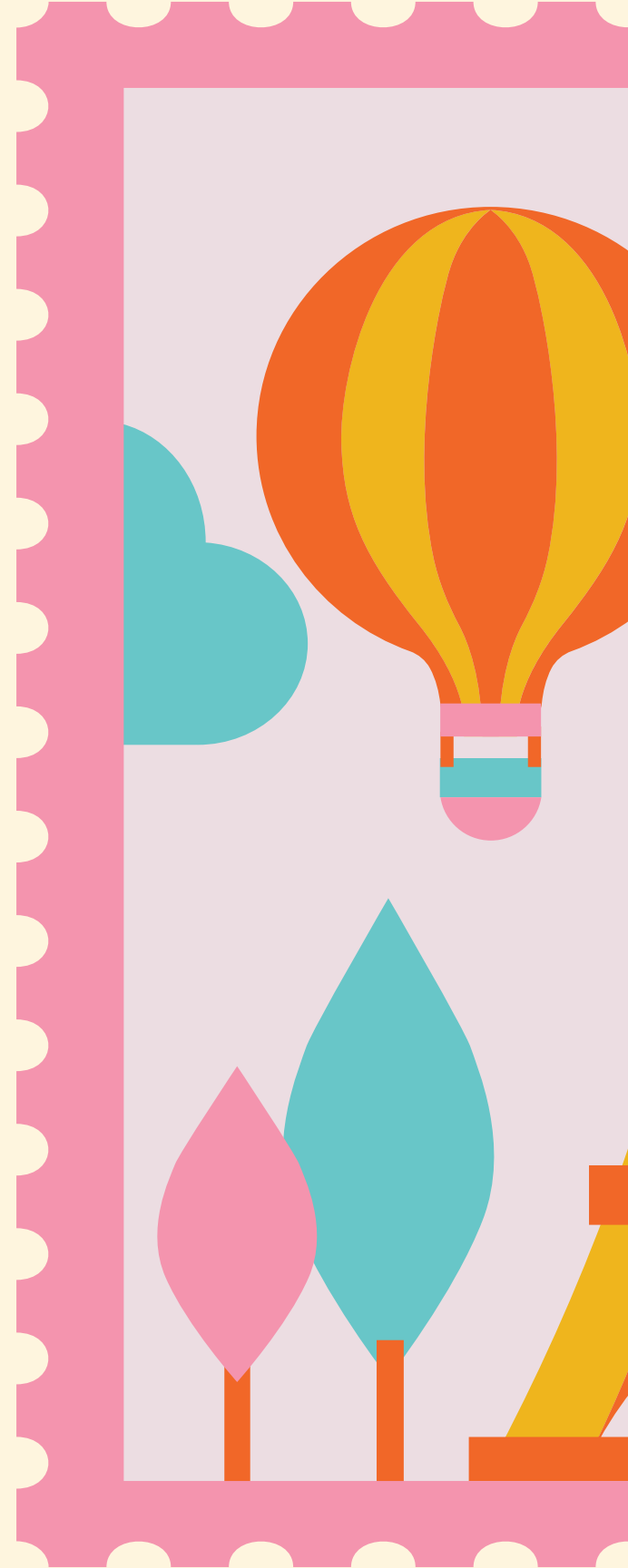
COMPARATIVE ADJECTIVE

The watermelon is bigger than the apple.

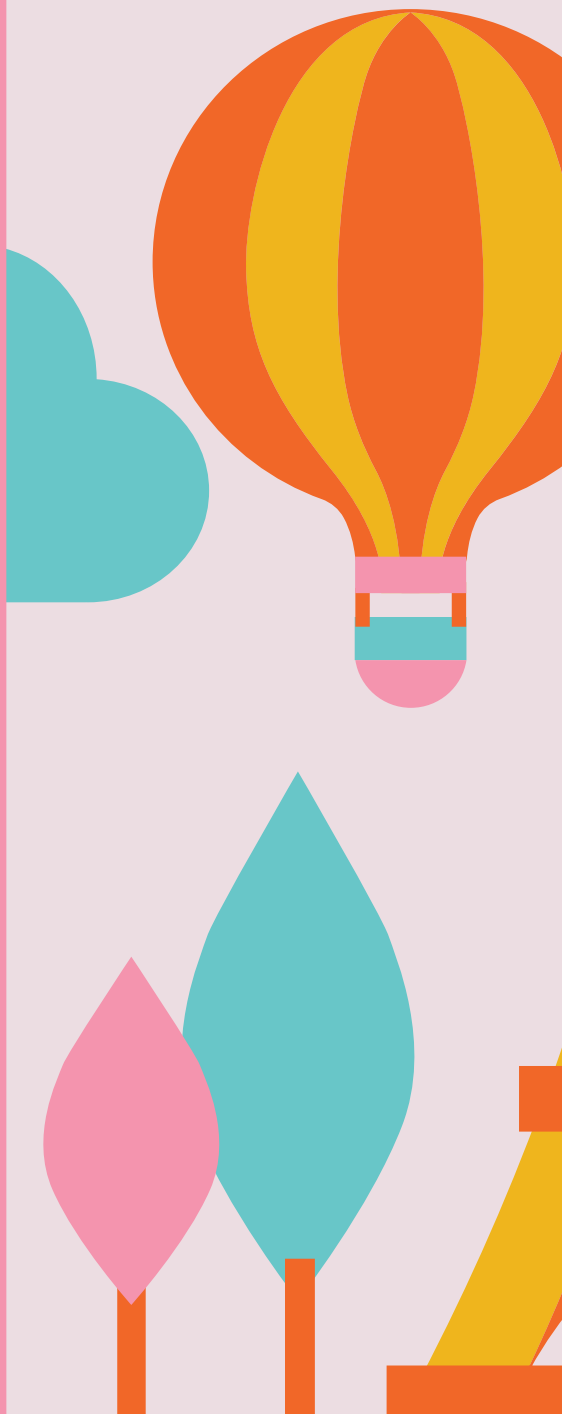


COMPARATIVE ADJECTIVE

The watermelon is **bigger** than the apple.



RULES IN COMPARATIVE ADJECTIVES





RULE #1

Most one-syllable
adjectives make their
comparative by
adding **-er**.

EXAMPLE

Tokyo is **larger** than Shanghai.





RULE #2

In some adjectives, the spelling is changed.

EXAMPLE

Jakarta is **busier** than Hanoi.





RULE #3

For longer adjectives,
including some two-
syllable adjectives, use
more + adjective.

EXAMPLE

Mumbai is **more crowded** than Manila.





RULE #4

To make a comparison stronger, use **much**.

EXAMPLE

Katie said that living in the countryside is **much more peaceful** than living in the city.





RULE #5

Use **than** when
comparing two nouns

EXAMPLE

St. Petersburg is **quieter than** Moscow.
Moscow is **much more polluted than** St.
Petersburg.



RULE #6

To make a comparison
between things that
are or aren't equal,
use **(not) as ... as**

EXAMPLE

Bangkok is **as beautiful as** Kuala Lumpur.

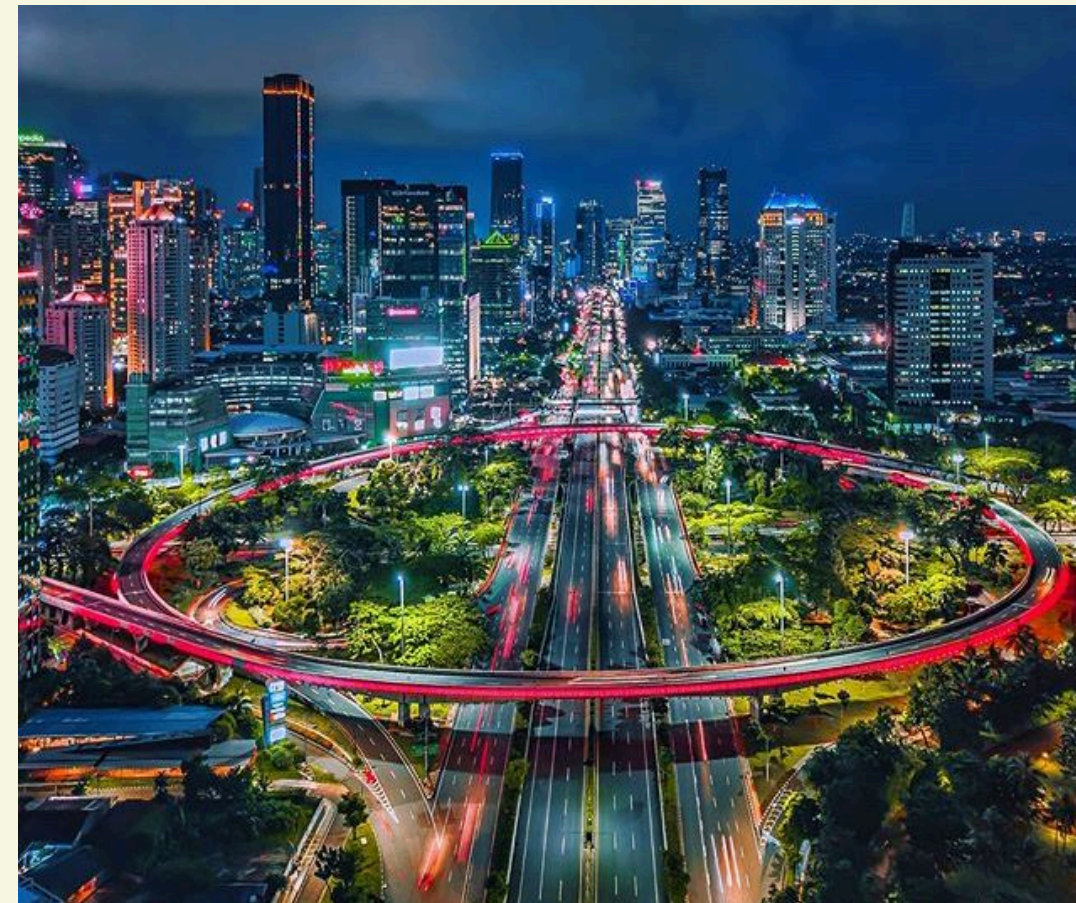
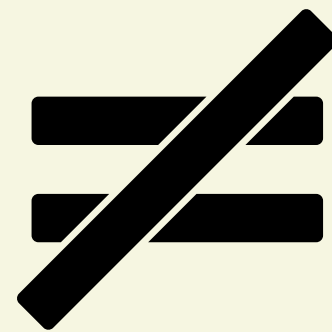


=



EXAMPLE

Manila is **not as big as** Jakarta.



EXAMPLE

Manila is **not as big as** Jakarta.

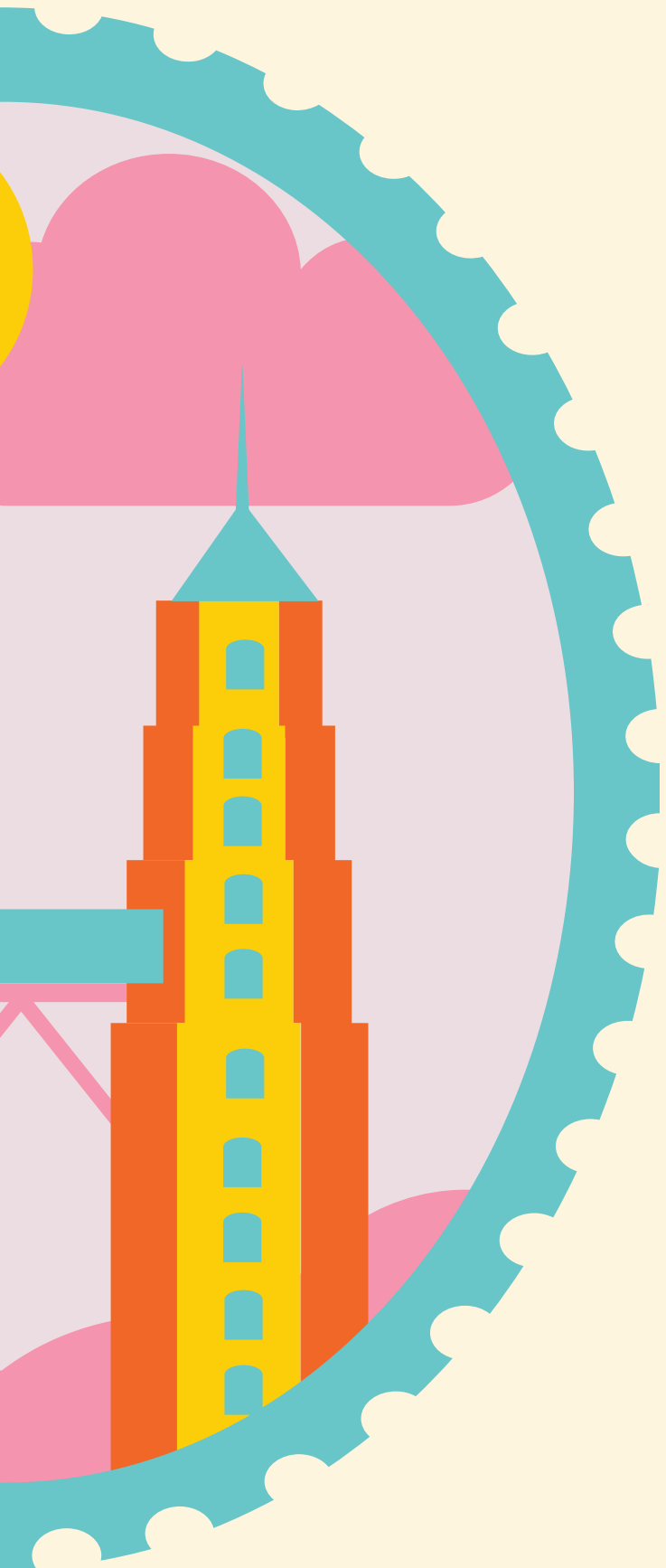


[Click here to play.](#)

COMPARING CITIES



Look at the following pictures of the cities. Using the provided adjectives, work in pairs and compare the cities. Use the stars (★) on the pictures as a guide to compare the cities. Two stars indicate a general comparison while three stars requires a stronger comparison.



EXAMPLE

★★ Paris

★ Tokyo

Adjective: Expensive

Sentence: Paris is **more expensive than**
Tokyo.

EXAMPLE

★Washington DC

★★★New York

Adjective: Small

Sentence: Washington DC is **much smaller than** New York.

EXAMPLE

★Rome

★★Athens

Adjective: Old

Sentence: Rome **isn't as old as** Athens.



★★★Mexico City

★London

Adjective: Congested



2

★★★ Bangkok
★ Jakarta
Adjective: Hot

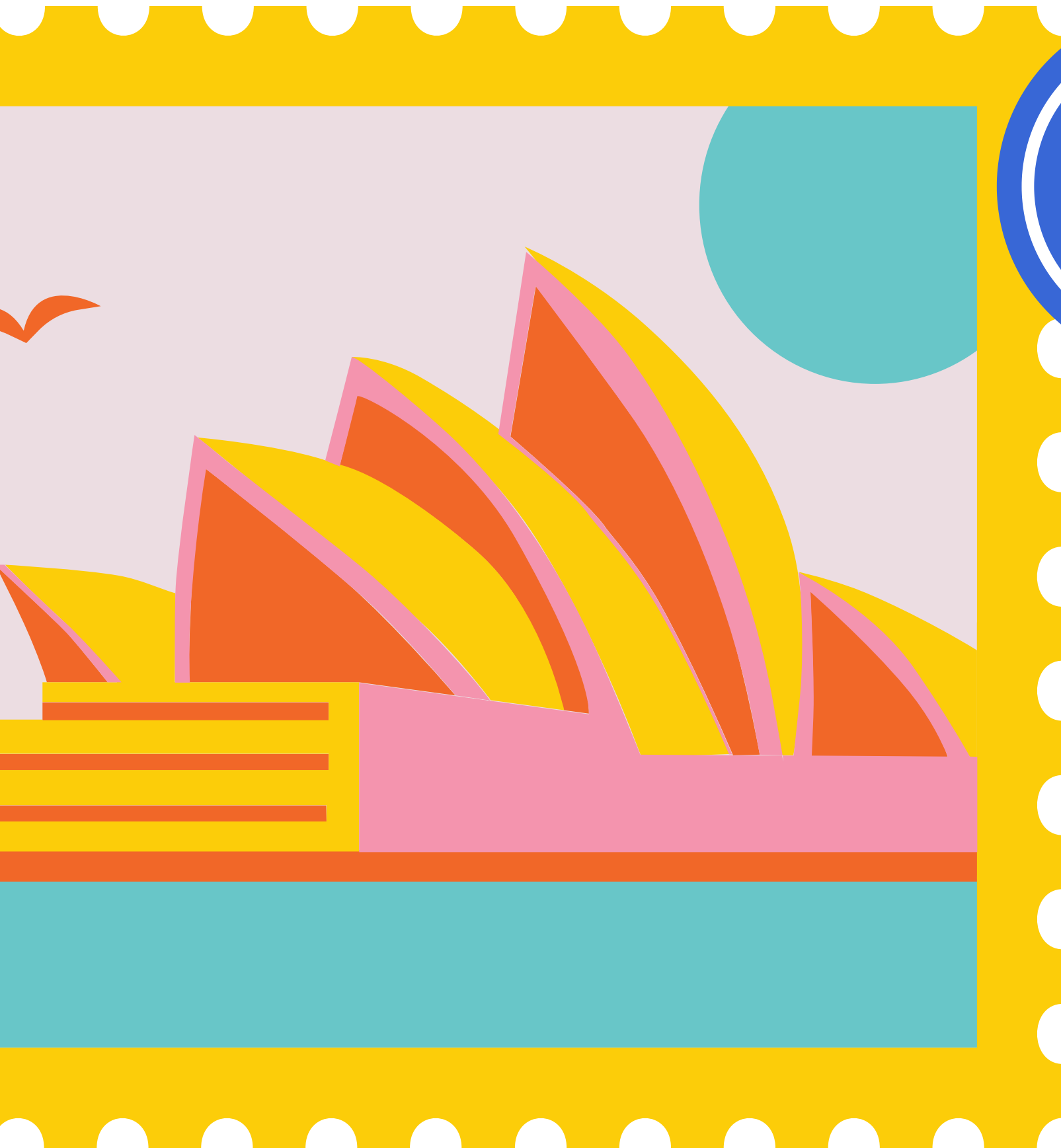


★★★Bogota
★Barranquilla
Adjective: High



4

★ Ankara
★★ Istanbul
Adjective: Big



5

★★ Florence

★★ Venice

Adjective: Beautiful

ACTIVITY

Work in groups of five. Discuss and compare towns and cities in Indonesia and in other countries in three to five sentences. Learners may choose the cities that they want to compare. They may use the adjectives presented in Exercise 1.

ACTIVITY

Attractive

Crowded

Unattractive

Congested

Historic

Calm

Friendly

Noisy

Expensive

Quiet

Busy

Elegant

Polluted

Beautiful

Lively

Unfriendly

QUIZ INSTRUCTIONS



Read the questions carefully. In your notebook, write the letter of the correct answer.



NO. 1

What word do we use to compare two nouns?

- a. as
- b. more
- c. than
- d. much

NO. 2

Most one-syllable adjectives form their comparative by adding -----.

- a. -est
- b. -er
- c. more
- d. than



NO. 3

Which of the following is the correct comparative form?

- a. more fast
- b. faster
- c. fastly
- d. most fast

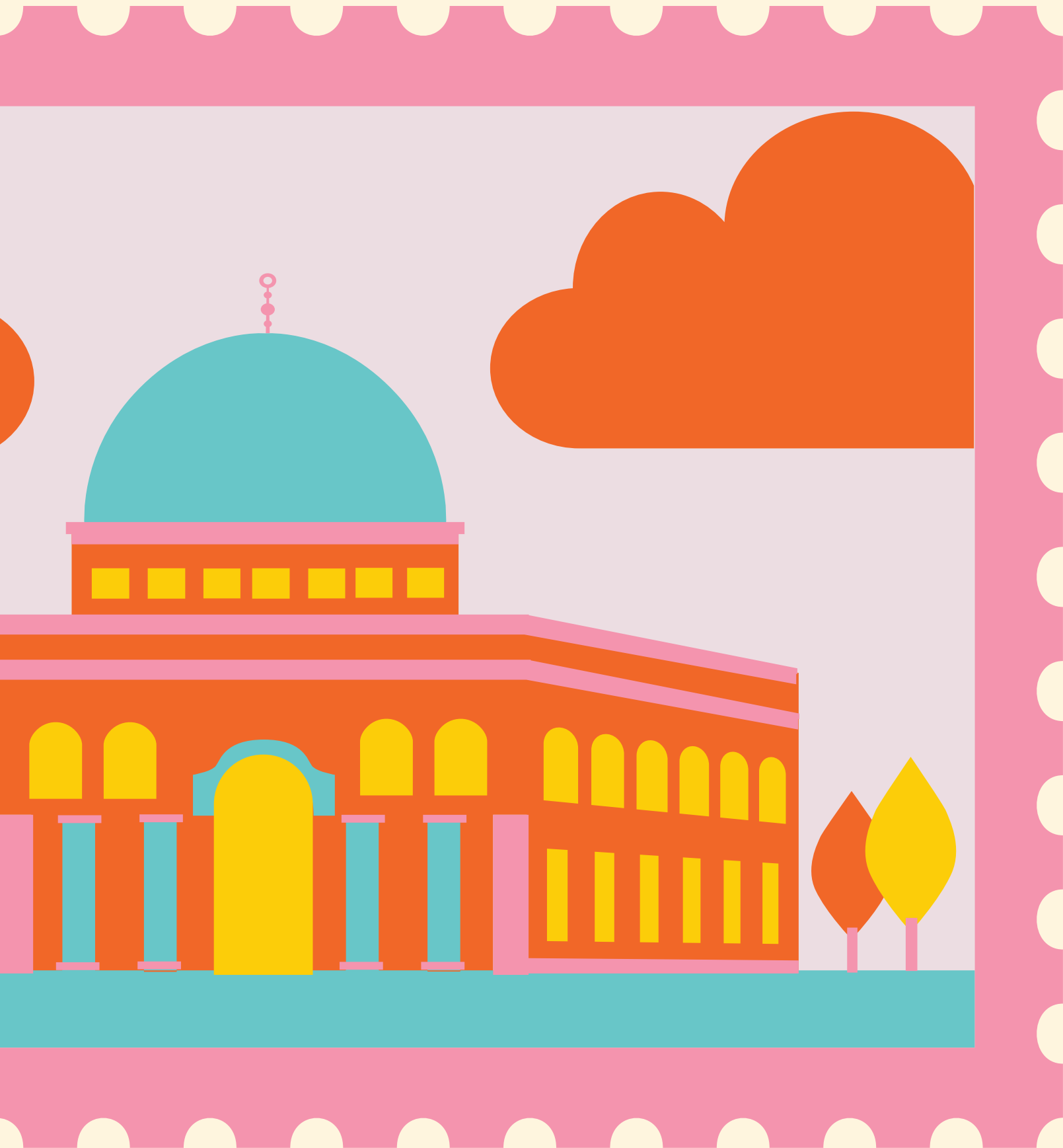


NO. 4

The countryside is much _____ than the city. (peaceful)

- a. peacefuller
- b. most peaceful
- c. more peaceful
- d. peacefulest





NO. 5

What word do we use to emphasize a stronger comparison?

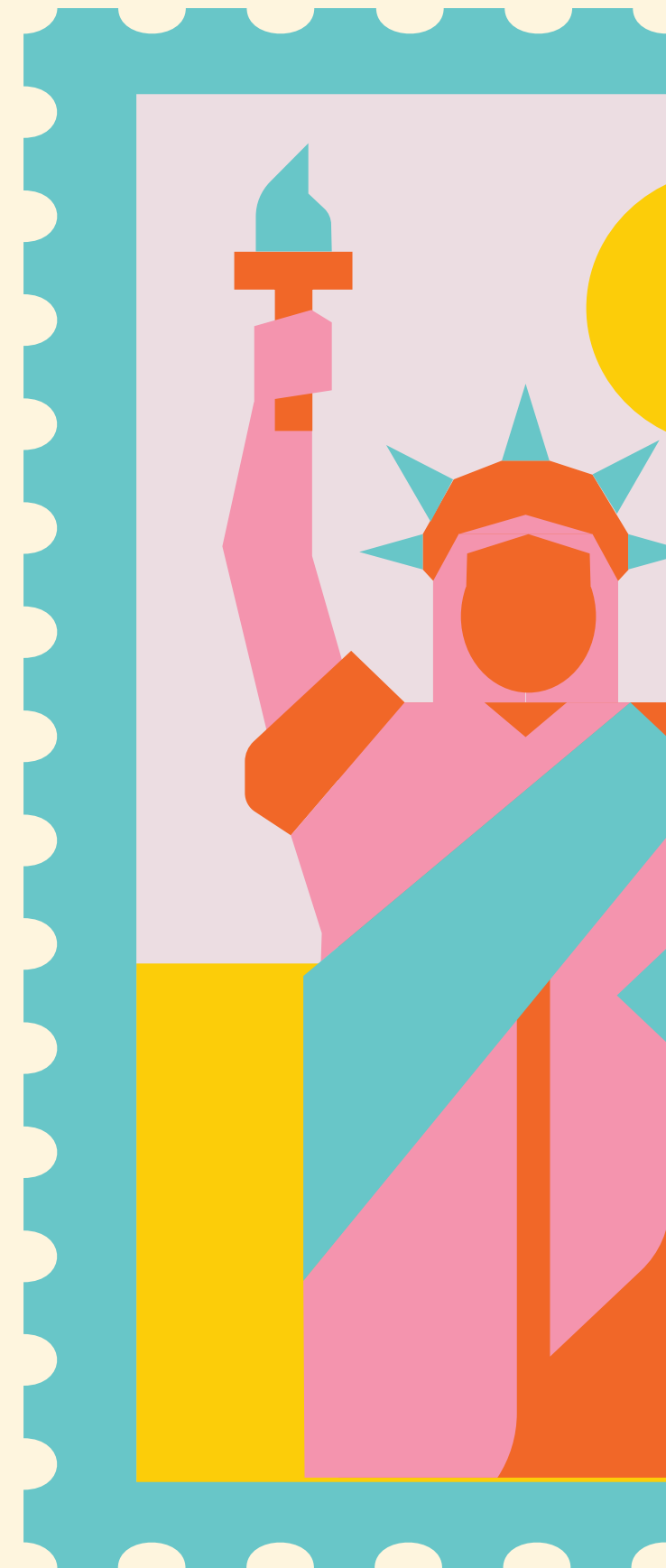
- a. much
- b. very
- c. more
- d. as



NO. 6

Bangkok is not _____ crowded
_____ Manila.

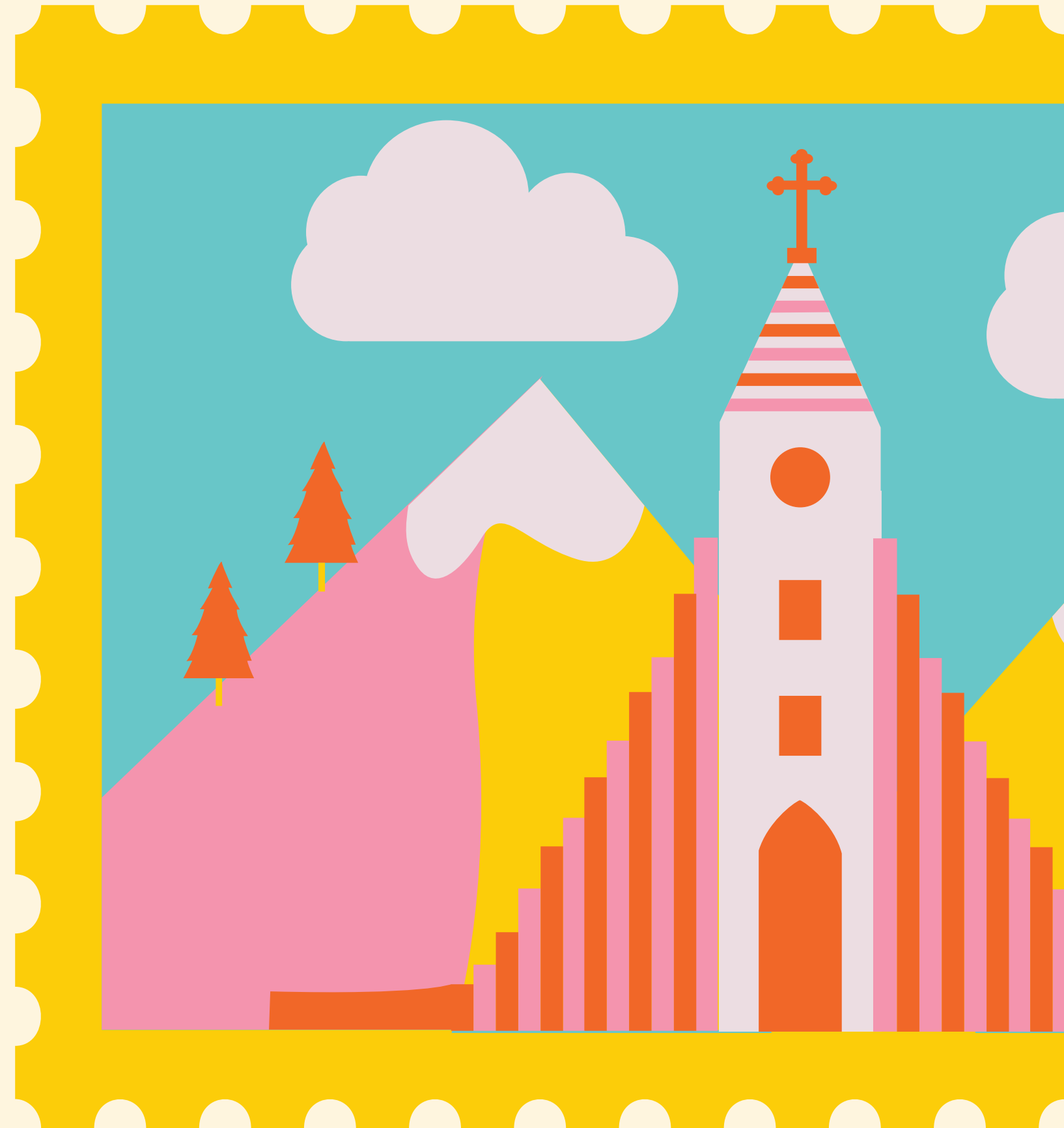
- a. more - as
- b. as - as
- c. less - than
- d. less - than



NO. 7

Which sentence correctly uses a comparative adjective?

- a. New York is the most busier city.
- b. Sydney is more beautiful than Melbourne.
- c. Paris is as more elegant as London.
- d. This town is much quiet than before.

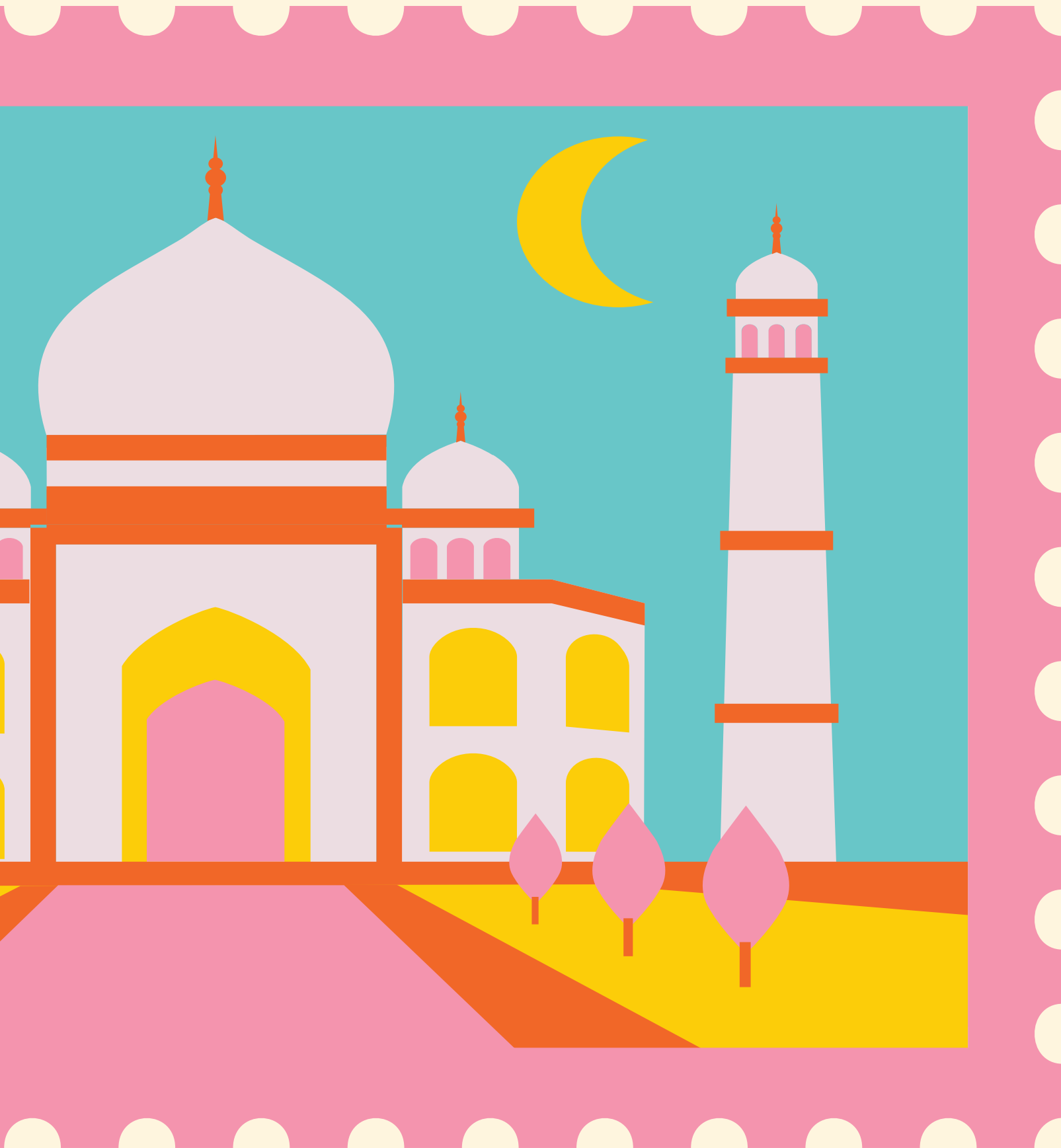


NO. 8

Which of the following is the correct comparative form of "happy"?

- a. more happy
- b. happiest
- c. happier
- 10 most happy





NO. 9

What phrase do we use when two things are equal in comparison?

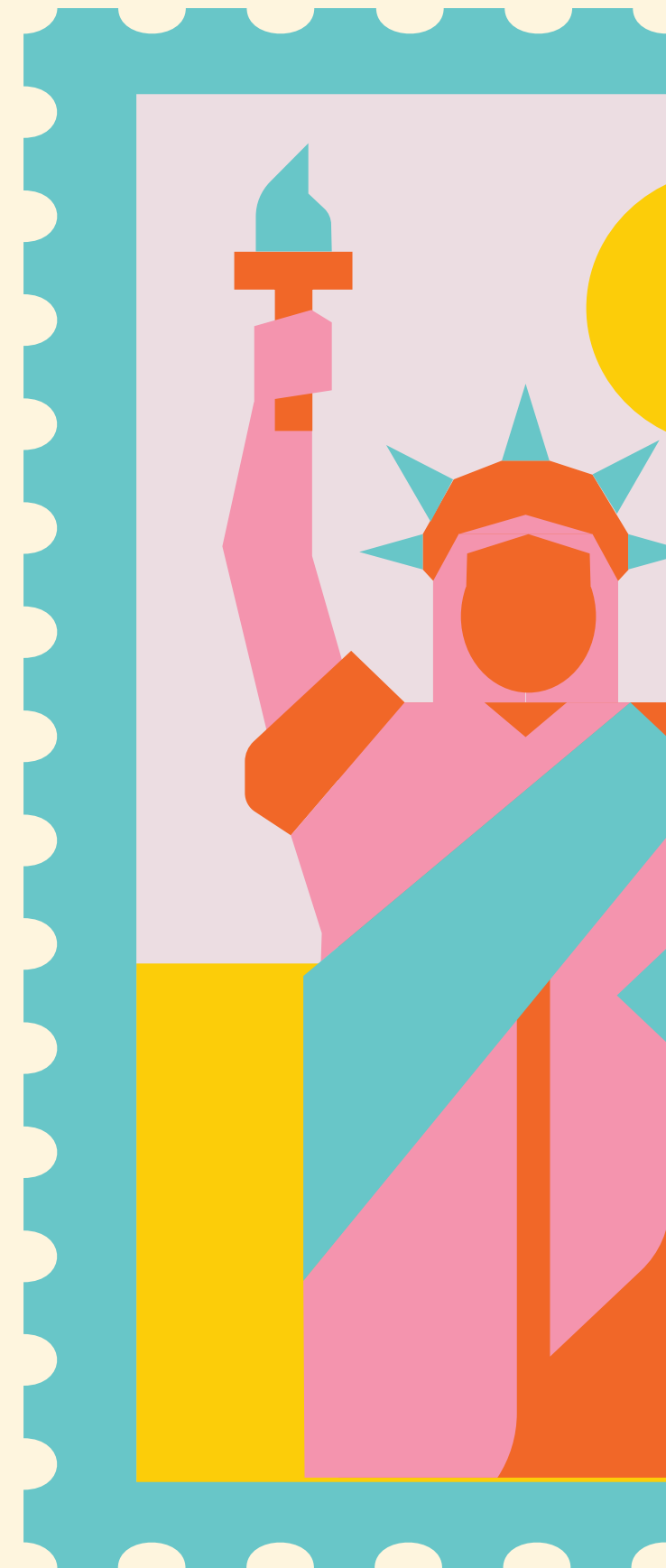
- a. not as...as
- b. much more...than
- c. as...as
- d. more...than



NO. 10

Which sentence is correct?

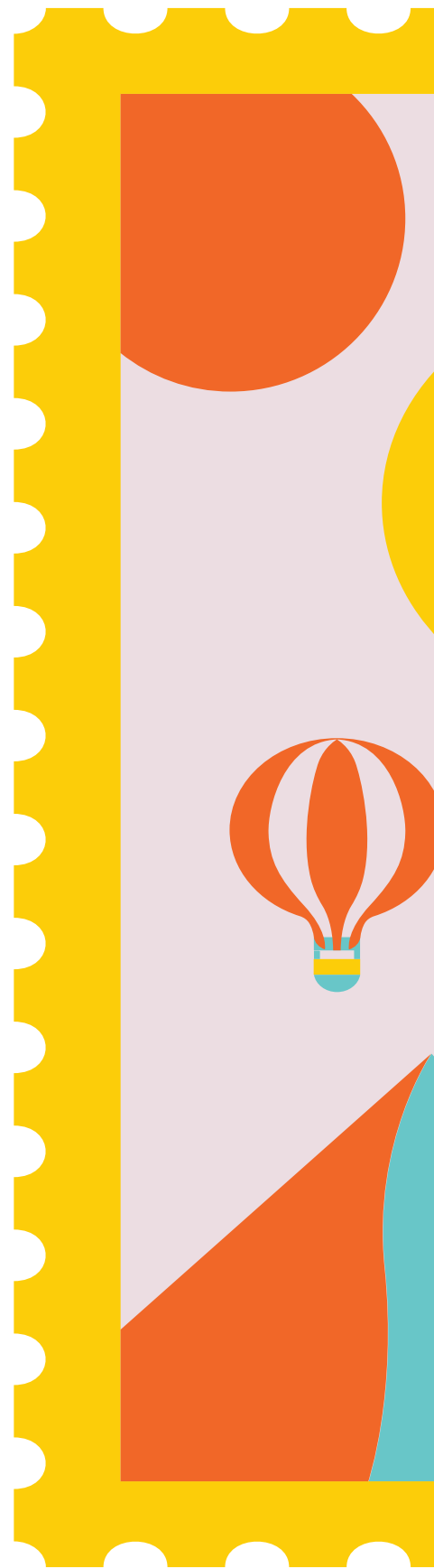
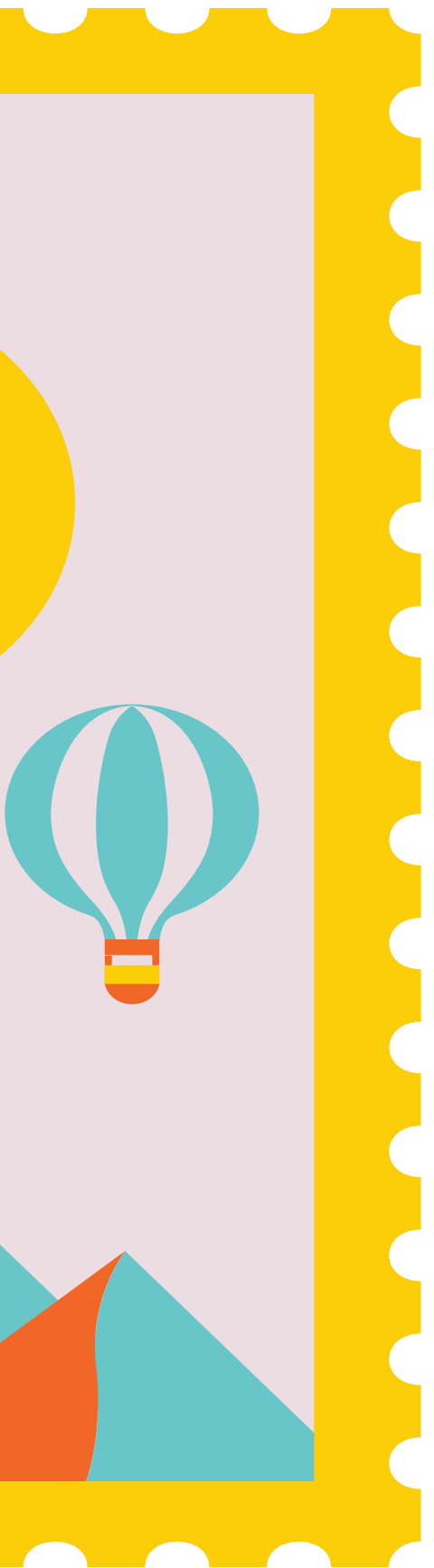
- a. Jakarta is more bigger than Hanoi.
- b. Manila is much busier than Cebu.
- c. This city is the most quieter than before.
- d. Tokyo is much modern than Seoul.



ASSESSMENT

Impress your teacher about Indonesia by writing in your paper on what makes Indonesia and Yogyakarta special from other countries and cities.

Your essay must include at least three (3) correct use of comparative adjectives.



THE END.



Thank you for playing!

